

## CorkSport Mazda 2 Aluminum Skid Plate

2011+ Mazda 2



**Thank you for purchasing the CorkSport Mazda 2 Skid Tray.** It offers solid protection against rocks and road debris and prevent damage to key components of your undercarriage. The CorkSport skid plate will provide maximum protection while adding minimal weight to the body of your vehicle. This one-piece precision skid plate is angled for a tight fit and includes metal support brackets that bolt to the vehicles structure for added rigidity. Please let us know your feedback by submitting at review at <http://www.corksport.com/corksport-mazda-2-skid-tray.html>

### Pre-Installation Notes:



**Make sure your vehicle is completely cooled down** prior to starting installation.



**These instructions were written for reference only** and the use of a factory service manual is recommended. Please read these instructions thoroughly prior to starting installation



**How our instructions work:** To best cover all of our customers experience levels, we have included an overview checklist for the more technically advanced users along with step-by-step instructions for customers that require additional detail.



**These installation instructions were written using a 2011 Mazda 2.**

### Materials and Time:



#### General Info.

Part #: Mz2-8-100

Time Est: 1-2hrs.

Wrench Rating: 2/5



#### Tooling List

5mm Allen  
12mm Socket  
14mm Socket  
17mm wrench



#### Parts List

One (1) Aluminum Skid Tray  
Two (2) Stand Off Brackets  
Four (4) 14mm bolts, washers, 17mm nuts  
Five (5) Plastic Isolators  
Five (5) M5 Allen head bolts  
Two (2) 12mm bolts and nuts  
One (1) Riv nut tool  
Six (6) Riv Nuts (one extra)

Need Help With Your Installation?

Call (360) 260-CORK



## Checklist

This is an overview of each step in the build. You can use this as a reference and a checklist as you button up the work on your car

### 1. Installing the CorkSport Skid Tray



**These instructions are made for the Mazda 2.**

- a) Jack up and support vehicle on jack stands.
- b) Install four (4) RivNut fittings in the factory holes next to the lower control arms (**Figure 1a**).
- c) Install the last RivNut fitting in the center of the rear portion of the sub frame (**Figure 1b**).
- d) Remove the 12mm bolt from the crash bar (**Figure 1c**).
- e) Install the OEM 12mm nut and bolt through the bracket leaving it loose (**Figure 1d**).
- f) Install the bracket from the front of the crash bar, leave it loose for now (**Figure 1e**). Repeat for the other side.
- g) Install the skid plate starting with the rear center Allen bolt and washer while supporting the front with a jack. Leave the Allen loose.
- h) Install the (4) 14mm bolts and 17mm nuts to attach the front of the skid tray to the front brackets. Leave the bolts loose (**Figure 1f**).
- i) Install the remaining four (4) Allen bolts and washers, leaving them loose (**Figure 1g**).
- j) Align the Skid Tray so that is not binding on any of the bolts.
- k) Tighten the four (4) 14mm bolts then tighten the 12mm bolts on the crash bar bracket.
- l) Tighten the five (5) Allen head bolts.



**This completes the installation of your skid tray. Take your vehicle for a test drive. If you experience unusual sounds check that all hardware is tight.**



## Detailed Instructions

These instructions are made for the Mazda 2

### 1. Installing the CorkSport Skid Tray

a) **Jack up the vehicle and support it on jack stands.** Refer to the owners manual for jack position and jack stand points.

b) **Install the RivNut fittings** in the factory holes located by the lower control arms. There will be four total, two on the passenger side and two on the drivers sides (see **red circles** in **Figure 1a**). Detailed instructions are located in Section two.

Video support on how to install RivNuts can be found at the following link: <http://youtu.be/ZwfYpOOy0fM>

c) **The last RivNut fitting** is located at the rear of the sub-frame on the front edge (see **red circle** **Figure 1b**).

Make sure to not over tighten the RivNut fitting. You can damage the tool or the RivNut itself.

d) **Remove the 12mm OEM bolt** from the crash bar on both the driver and passenger sides (see **red circle** in **Figure 1c**).



Figure 1c

e) **Install the supplied 12mm nut and bolt** through a **provided bracket** (leaving the nut loose as shown in **Figure 1d**) it should be assembled bolt, washer, bracket, washer, nut. With the head of the bolt on the flat side of the bracket.

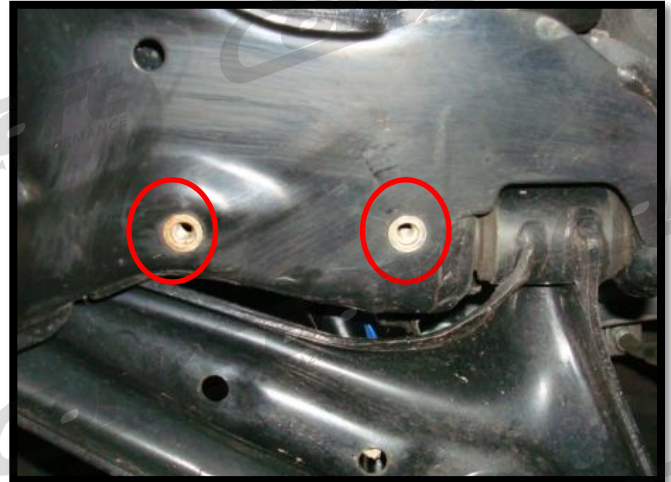


Figure 1a

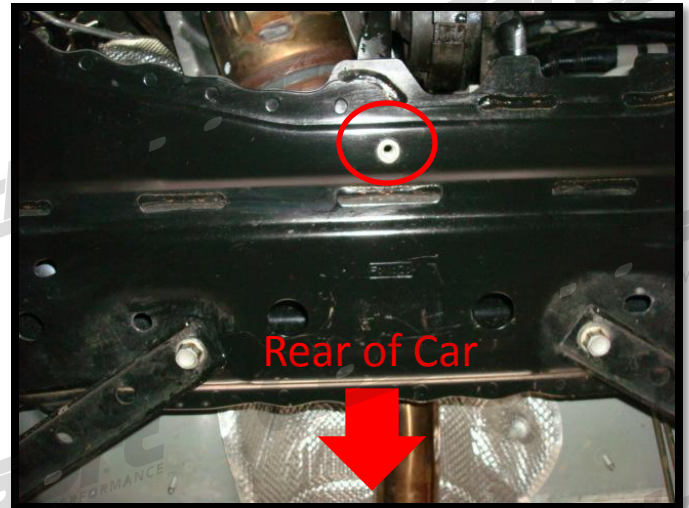


Figure 1b



Figure 1d

## 1. Installing the CorkSport Skid Tray Continued

- f) **Install the bracket from the front side of the crash bar.** Do not tighten the bolt down as you may need to adjust it to align the skid tray (see [Figure 1e](#)). Repeat (d) and (e) for the passenger side.
- g) **Install the skid plate.** Start with the rear center Allen bolt with washer while supporting the front with a Jack. Don't tighten the hardware all the way down.
- h) **Install the (4) 14mm bolts** from the underside of the tray so the head of the bolt faces the ground into the brackets. Using the 17mm nuts on the top. Leave these bolts/nuts hand tight for now. (See [Figure 1f](#))
- i) **Install the remaining four (4) Allen bolts** and washers (shown in [Figure 1g](#)) located in the rear of the skid tray. Again, leaving them hand tight.
- j) **Align the skid tray** so that its not binding on any of the bolts.
- k) **Tighten the (4) 14mm bracket bolts** then tighten the 12mm bolts on the crash bar bracket.
- l) **Lastly, tighten the five (5) Allen head bolts** (red circles [Figure 1g](#)).



figure 1e




Figure 1f



Figure 1g

**!** This completes the installation of your skid tray. Take your vehicle for a test drive. If you experience unusual sounds check that all hardware is tight.

## 2. Detailed Installation of RIV Nuts.

 Video support on how to install a Rivnut available at <http://youtu.be/d0fk-1LiUxM>

- a) **(Figure 3a)** shows a cross section of the RIV nut and RIV nut installation tool. First, place the RIV nut on the RIV nut installation tool. Then, place the entire assembly with socket wrench and end wrench into the desired hole. **(Figure 3b)** shows the end that will be going into the body of the vehicle. RIV nuts are needed for areas that are not accessible with traditional nuts.

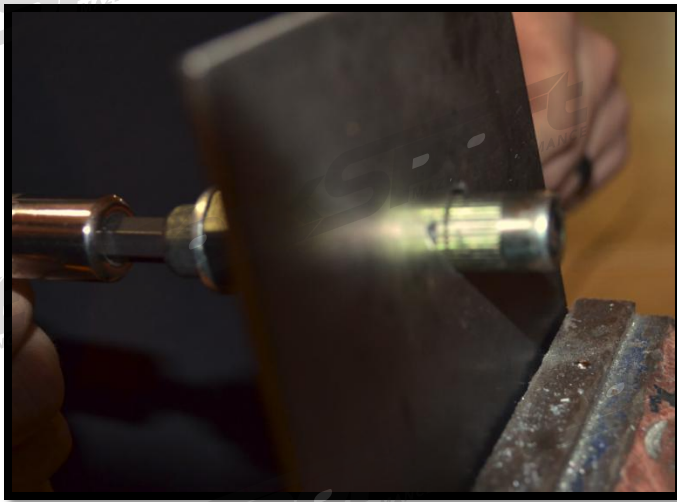


Figure 3b

- b) **Hold the end wrench while you start to tighten the socket wrench.** Some of the larger RIV nuts may require a breaker bar or larger socket wrench. There is also an included collar for some of the larger RIV nuts that can be used to strengthen the RIV nut, shown below. Tighten the RIV nut until it is secure to the body.



Figure 3c

- c) **Once the RIV nut is secure, you can pull out the RIV nut installation tool.** Reverse the socket wrench and undo the bolt. Make sure to hold the end wrench while pulling loosening the installation tool as well.

- d) **(Figure 3c and Figure 3d)** show how each end will look once you are finished. The end shown on **(Figure 3c)** generally will not be visible.

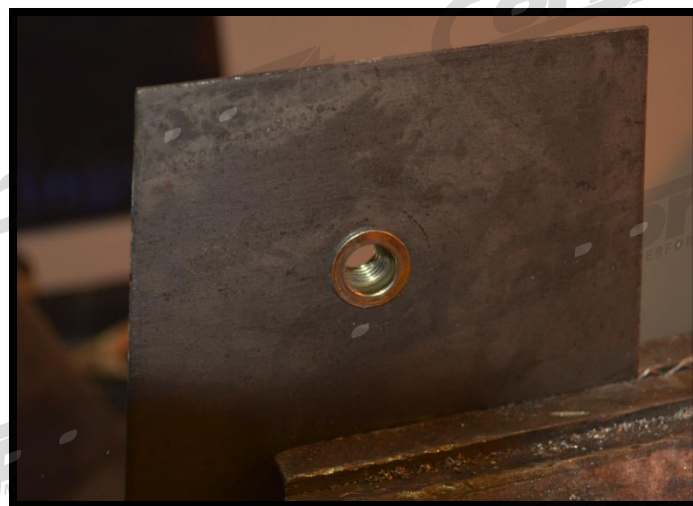


Figure 3d

## What's Next:

### [CORKSPORT 2011+ Mazda 2 Exhaust System](#)



The CorkSport exhaust features 54mm exhaust piping, a straight through high flow muffler, and a 90 mm rolled stainless steel exhaust tip which all combine to give the Mazda 2 a sporty look and sound. The exhaust has a mellow tuned exhaust note without a harsh, raspy sound.

The new Power Series Exhaust for the 2011+ Mazda 2 provides noticeable power gains, solid value in an attractive and stylish part. We have thoroughly tested this exhaust on our cars in our workshop, so you can relax knowing that we've done our homework. All you have to do is install, and enjoy

### [CORKSPORT Mazda 2 Rear Chassis Brace](#)

**Increase the stiffness of your Mazda 2 body and limit chassis flex** for positive driver feedback under hard cornering with the CorkSport Mazda 2 Rear Chassis Brace. Designed using a 1 inch extruded aluminum bar, the CorkSport Mazda 2 Rear Chassis Brace provides additional strength without adding unwanted excessive weight to the body of the vehicle, giving you with a noticeable improvement in your driving experience by making the suspension more effective.

The innovative design allows for rapid and easy removal and installation of the bar with the push button quick release pins and the Mazda 2 Rear Chassis Brace has been vigorously tested to ensure optimal characteristics. Testing completed on a slalom course showed an increase in as much as 7 mph over an otherwise stock vehicle.

