

INSTALLATION INSTRUCTIONS



CORKSPORT EWG Housing Dumptube for CS 3.5" Downpipe

2007-2013 Mazdaspeed 3

PART #: GEN-6-575-17

Need Help With Your Installation? Call (360)260-CORK



*We absolutely, positively,
deliver - every time.*

CORKSPORT.COM

DETAILED INSTRUCTIONS:



These instructions are very basic and only cover installation of the EWG onto a CS turbocharger and the CS dumptube onto the EWG. For EWG housing installation or full 3.5" downpipe installation, please see the instructions that came with your parts or that are on our website. Other EWG turbocharger housings will vary.



Before continuing on with the next steps, be sure to follow your external wastegate manufacturer's recommendations for coolant and air ports on your EWG. You will also want to discuss with your tuner what spring pressure to use in your EWG and change springs as needed. Boost pressure will closely match spring pressure used in EWG. Maximum boost pressure will be approximately 1.8 times the spring pressure chosen.

1. Installing the EWG and CS Dumptube



Ensure you have the valve seat of the EWG installed in the EWG before installing onto the CS turbo. Failure to use this will result in poor boost characteristics. Shown with **red arrows** in **Figure 1a**.

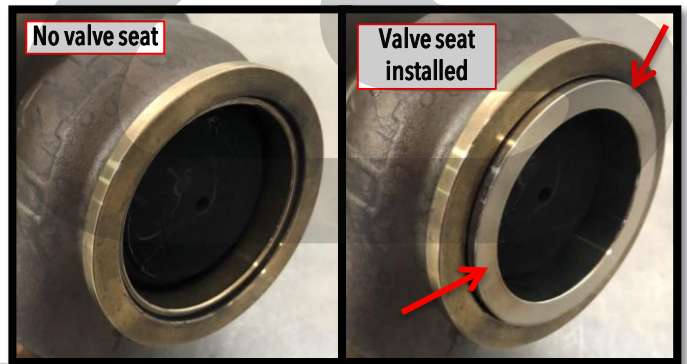


Figure 1a

- a) Attach your EWG onto your CS turbocharger using the larger of the two clamps that came with your EWG. Tighten the clamp using an 8mm socket and 5mm Allen to 8-12ft-lbs. Shown with **red arrow** in **Figure 1b**.
- b) Attempt to rock your EWG side to side and/or rotate it as shown with **blue arrows** in **Figure 1b**.
 - i. If the EWG **does not** rock or rotate, **no shims are needed**. Loosen the clamp slightly so the EWG can rotate for alignment.
 - ii. If the EWG **does** rock or rotate with the **clamp tight**, you will need to use one or both of the shims provided with your EWG dump tube. Please see the next step.

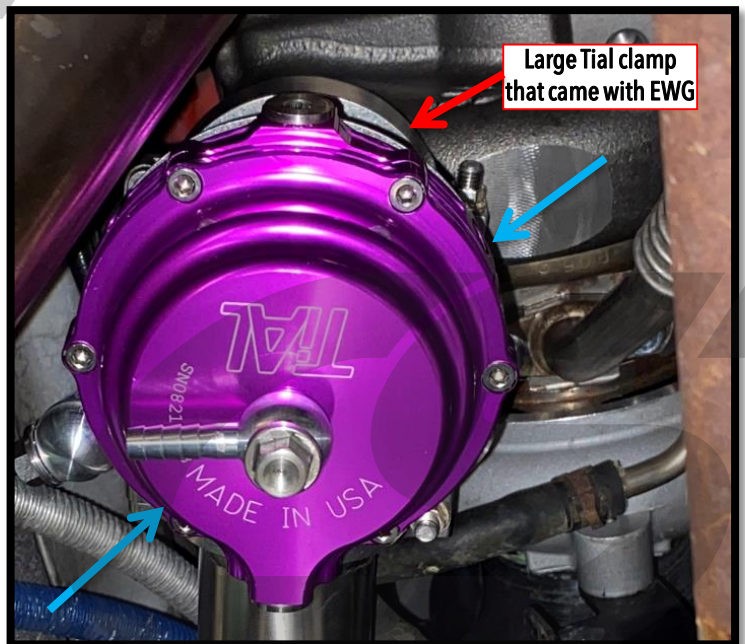
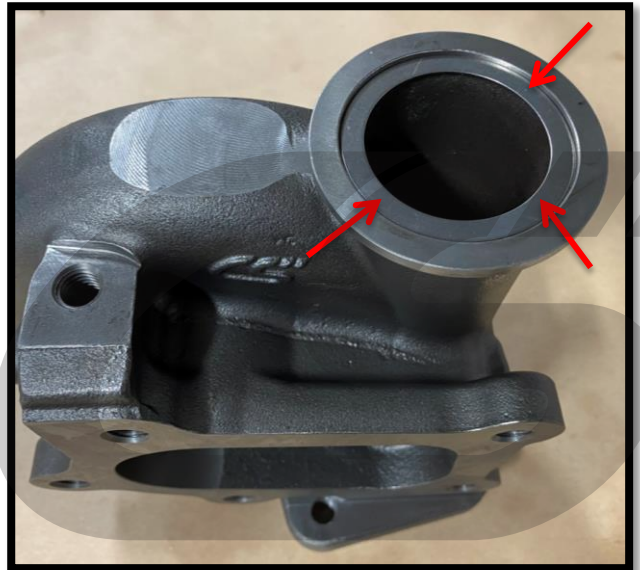


Figure 1b

DETAILED INSTRUCTIONS:**1. Installing the EWG and CS Dumptube (continued)**

If your EWG did not rock/rotate, skip to Step 1i to continue.

- c) Remove the Tial clamp & EWG from your turbocharger.
- d) Locate the two shims that came with your dumptube kit. One shim is 0.5mm thickness and the other is 1mm thickness.
- e) Place the 0.5mm shim onto the EWG port of your turbine housing as shown in **Figure 1c**. A small amount of super glue can help keep it in place during the next steps.
- f) Reinstall the EWG onto your turbine housing and tighten the clamp like before. Again test for rocking/rotation when the clamp is tight.
- g) If rocking/rotation is still present with a tight clamp, repeat this process again using the 1mm shim. If still present, repeat again with both 0.5 and 1mm shims.
- h) After the correct shim setup is found, loosen the EWG clamp to allow for alignment via rotation.
- i) Install the CS dump tube onto the other port of your EWG using the smaller Tial clamp that came with your EWG. Tighten only enough to keep it attached but still allow for rotation. Shown attached in **Figure 1d**.

**Figure 1c****Figure 1d**

DETAILED INSTRUCTIONS:

1. Installing the EWG and CS Dumptube (continued)

- j) **Rotate your EWG and dumptube until there is good clearance to all components.** The outlet of your EWG should point towards the transmission and slightly towards the firewall. The dump tube bends around and sits to the side of your engine mount. **Figure 1d** on the previous page shows good alignment.
- k) **Double check your EWG and dump tube have good clearance to any wiring or coolant lines.**
- l) **Once happy with fitment, tighten both EWG clamps to 8-12ft-lbs** using a 8mm socket and 5mm Allen wrench.
- m) **If this is your first time running an EWG, connect your EWG to your EBCS following your EBCS manufacturer's recommended setup.** If you have a CS EBCS, your EWG can be setup in "interrupt" setup or a 3-port push-pull setup. The following link has the CorkSport EBCS instructions: <https://corksport.com/support/instructions/GEN-6-710-WEB.pdf>
- n) **If this is your first time running an EWG, flash your tune for your new setup.**



Failure to connect EBCS lines correctly or failure to tune for the EWG can result in overboosting and catastrophic failure of your engine. Ensure your boost control lines are routed correctly and you have an appropriate tune for the EWG setup.



**This completes the installation of your CorkSport EWG Dumptube for 3.5" CS Downpipe
Enjoy the optimum boost control and new sounds!**