

Part # AXM-9-006



CorkSport Aluminum Shift Knob 2014+ Mazda's with manual transmissions.

Thank you for purchasing the CorkSport Mazda Aluminum Shift Knob. Adjustable weights to adjust your throw, increase the response and tailor it to you. Please let us know your feedback by submitting a review at: <http://corksport.com/corksport-mazda-3-aluminum-shift-knob.html>

Pre-Installation Notes:



Make sure your clothes, tools and hands are clean while working on the interior of your car.



These instructions were written for reference only and the use of a factory service manual is recommended. Please read these instructions thoroughly prior to starting installation



These installation instructions were written using a 2014+ Mazda 3, 2014+ Mazda 6, & 2013+ CX-5. Please follow the instructions for interior panel removal of your specific model, but installation of the shifter bushings is similar for each model.

Materials and Time:



General Info.

Part #: AXM-9-006
Time Est: 0.5 hours
Wrench Rating: 2/5



Tooling List

Phillips Head Screw Driver
Socket Wrench
12" Socket Extension
12mm Deep Socket
10mm Deep Socket
Torque wrench



Parts List

One (1) CorkSport Shift Knob Cap
One (1) CorkSport Shift Knob Body
One (4) CorkSport Shift Knob Weights
One (1) CorkSport Shift Knob Wave Spring
One (1) Corksport Aluminum Boot Spacer

Need Help With Your Installation?
Call (360) 260-CORK

Detailed Instructions (CX-5)



Instructions for panel removal in the Mazda 6 start on Pg. 2
Instructions for panel removal in the Mazda 3 start on Pg. 3

1. Remove the Shifter Housing

a) **Remove the shift knob** by twisting it counter-clockwise (**Figure 1a**).



Figure 1a

b) **Remove the shift boot panel** by grasping inside the boot (where shown by **red arrow**) and pulling upward (**Figure 1b**).



Figure 1b

c) **Unscrew the two (2) Phillips head screws** fastening the shift boot bracket to the center console (**red circles** in **Figure 1c**). Set the bracket aside.

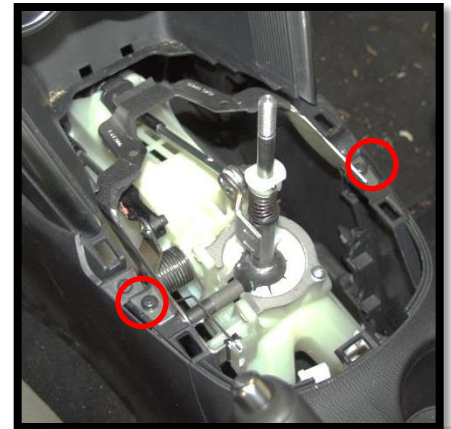


Figure 1c

d) **Remove the cup holder panel.** Open the armrest lid, remove the parking brake boot by unbuttoning it and unzipping it, then lift upward on the panel (where shown by **red arrow** in **Figure 1d**).



Figure 1d

Detailed Instructions (Mazda 6)

1. Remove the Shifter Housing

- a) **Unfasten the parking brake boot** by first unbuttoning then unzipping the boot. (Figure 1a).



Figure 1a

- b) **Remove the cup holder/parking brake panel.** Starting at the rear of the panel (under the armrest), pull the panel upward firmly (red arrows Figure 1b). Then work your way forward, on each side, to the shifter panel releasing each clip (red circles Figure 1b). Lastly, there is one clip on the front of the panel connected to the shifter panel (red dot Figure 1b). This may require significant effort to disengage the clips.

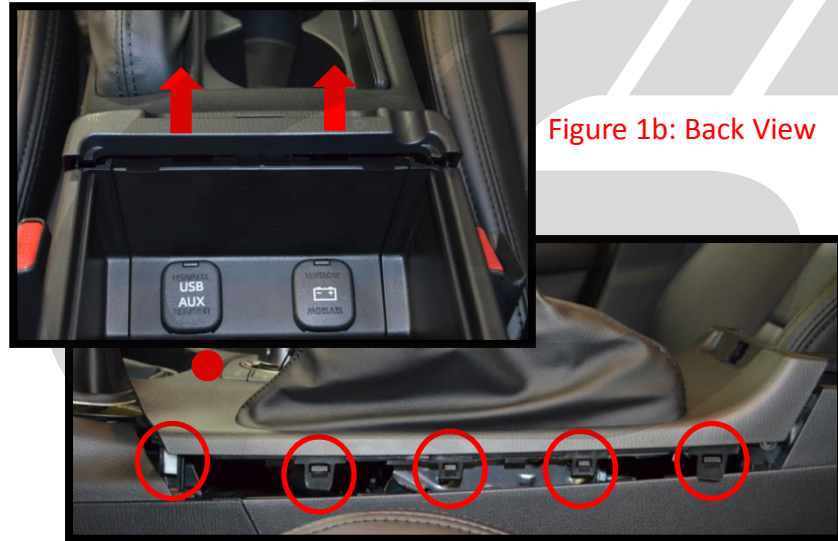


Figure 1b: Back View

Figure 1b: Side View

- c. **Disconnect the Commander Control wires (if equipped).** Pinch the connector and pull it out of the panel. (Figure 1c).



Figure 1c

- d. **Remove the shifter panel. Remove the shift knob** by unthreading it. Starting at the rear of the panel, pull the panel upward firmly (red arrow Figure 1d). Then work your way forward, on each side, releasing each clip (red dots Figure 1d). A flathead screwdriver may be used to pop the clips loose. Use tape to protect the interior trimming. This may require significant effort to disengage the clips.



Figure 1d

Detailed Instructions (Mazda 3)

1. Remove the Shifter Housing

- a) **Unfasten the parking brake boot** by first unbuttoning (circled in red) then unzipping the boot (Figure 1a).



Figure 1a

- b) **Remove the cup holder/parking brake panel.** Starting at the rear of the panel (under the armrest), pull the panel upward firmly (red arrows Figure 1b). Then work your way forward, on each side, to the shifter panel releasing each clip (red circles Figure 1b). Lastly, there is two clips on the front of the panel connected to the shifter panel (red dots Figure 1b). This may require significant effort to disengage the clips.

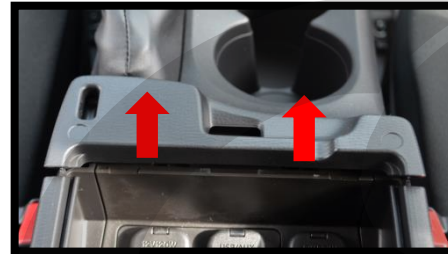


Figure 1b: Back View



Figure 1b: Side View

- c. **Disconnect the Commander Control wires (if equipped).** Pinch the connector and pull it out of the panel. (Figure 1c).

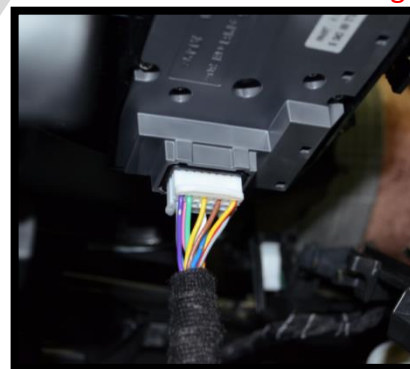


Figure 1c

- d. **Remove the shifter panel. Remove the shift knob** by unthreading it. Starting at the rear of the panel, pull the panel upward firmly (red arrow Figure 1d). Then work your way forward, on each side, releasing each clip (red dots Figure 1d). A flathead screwdriver may be used to pop the clips loose. Use tape to protect the interior trimming. This may require significant effort to disengage the clips.



Figure 1d



2. Install the Corksport Shift Knob

a) **Install the Corksport Aluminum Boot Spacer** onto the shifter assembly. **Figure 2a** show a detailed picture of where to install the aluminum spacer.

b) **Install the shifter panel.** Refer to **Figure 1d**.

c) **Connect the Commander Control wires (if equipped).** Refer to **Figure 1c**.

d) **Install the cup holder/parking brake panel.** Refer to **Figure 1b**.

e) **Install the CorkSport Aluminum Shift Knob.** Simply twist the knob on until it meets the boot. Shown installed in **Figure 2b**.



Figure 2a

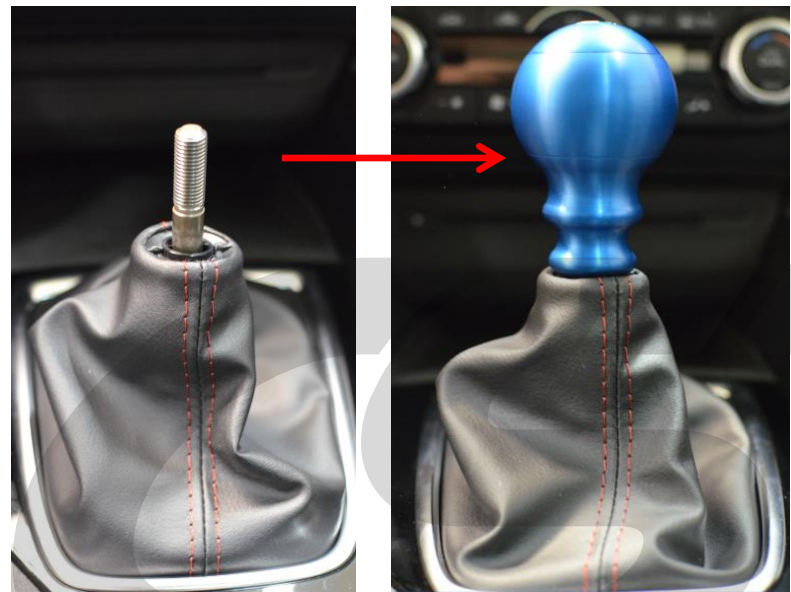


Figure 2b

3. Adjusting the CorkSport Shift Knob



The CorkSport Shift Knob is shipped with the maximum amount of weight installed. To reduce the weight, please follow these instructions.

a) Remove the shift knob from the car.

b) Unscrew the cap using a 5mm Allen wrench to start the cap unthreading. Finish unscrewing the cap by hand. **Figure 3a** show the how to use the Allen wrench. **Figure 3b** shows the point you should start using your hand.

c) Select the desired weight.

- 1) No Weights – **175g**
- 2) 1 Weight – **215g**
- 3) 2 Weights – **250g**
- 4) 3 Weights – **285g**
- 5) 4 Weights – **320g**

d) Place the desired amount of weight(s) in the body of the shift knob.

e) Install the spring on top of the weight. **Figure 3c** shows the correct way to install 3 weights as an example.

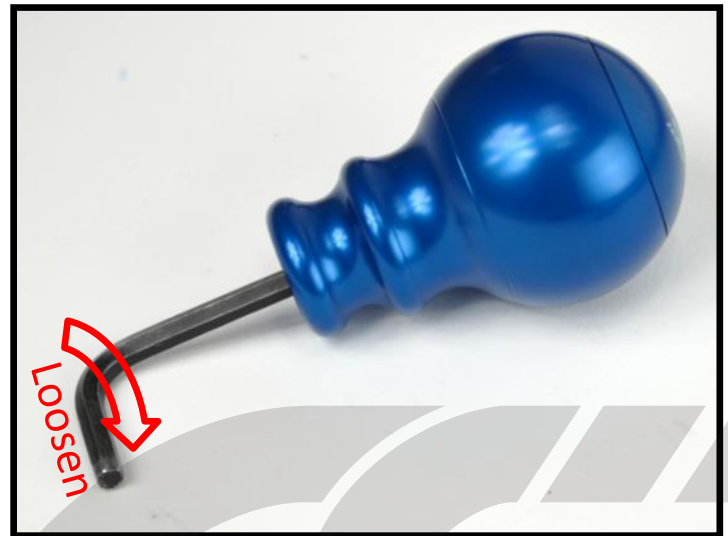


Figure 3a



Figure 3b

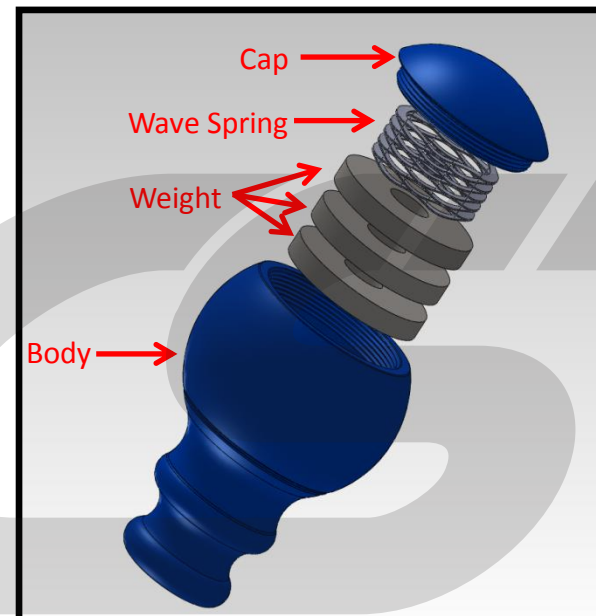


Figure 3c

3. Adjusting the CorkSport Shift Knob Continued...



If no weights are being used then you don't need to use the spring inside the body.



If only using one weight the spring pressure is very low and you might hear some rattling. It is better to assemble to shift knob with the spring first then the weight on top as shown in **Figure 3d**.

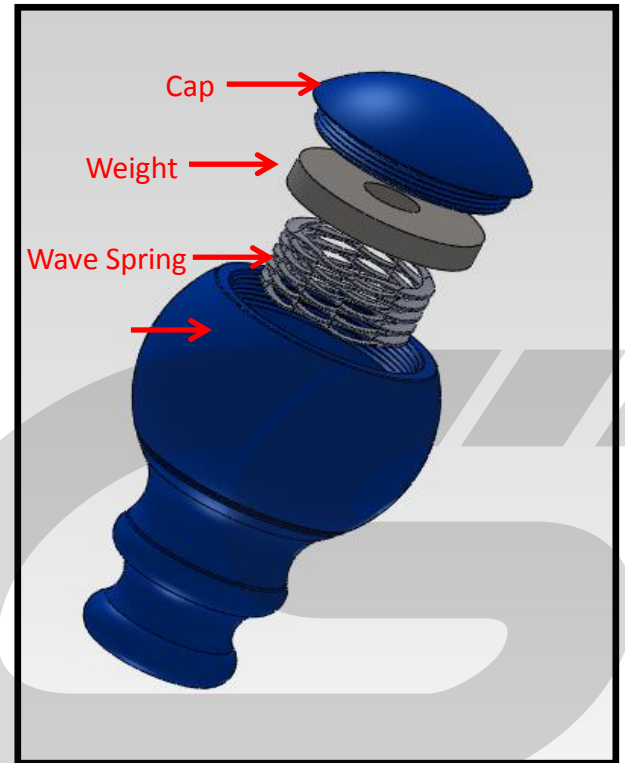


Figure 3d

f) Replace the cap on the top of the body by hand.

Final assembly shown in **Figure 3e**.



Be careful not to cross thread the cap onto the body. Screw the cap counter clock-wise until the cap seats to the body. Then, tighten the cap clock-wise by hand. No not tighten with Allen.



No not tighten with Allen.

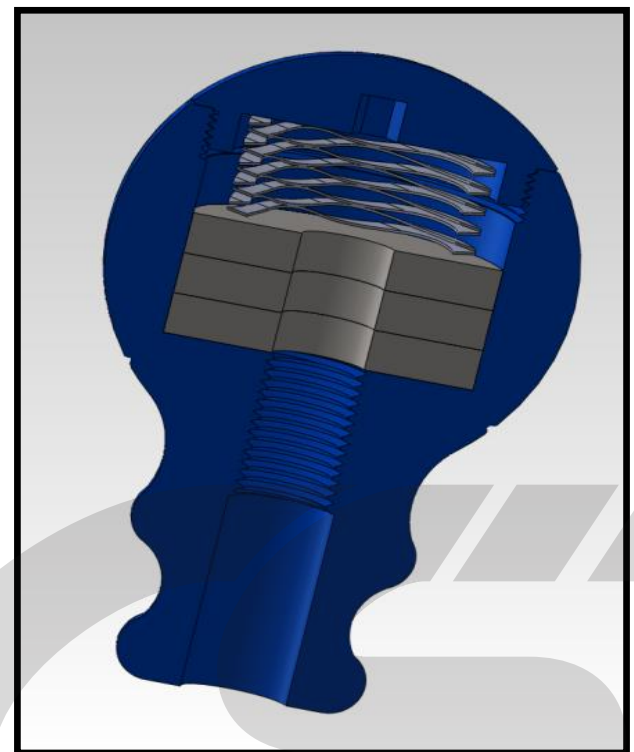


Figure 3e